

Bredel C42 close-coupled hose pump



Bredel C42 close-coupled hose pump

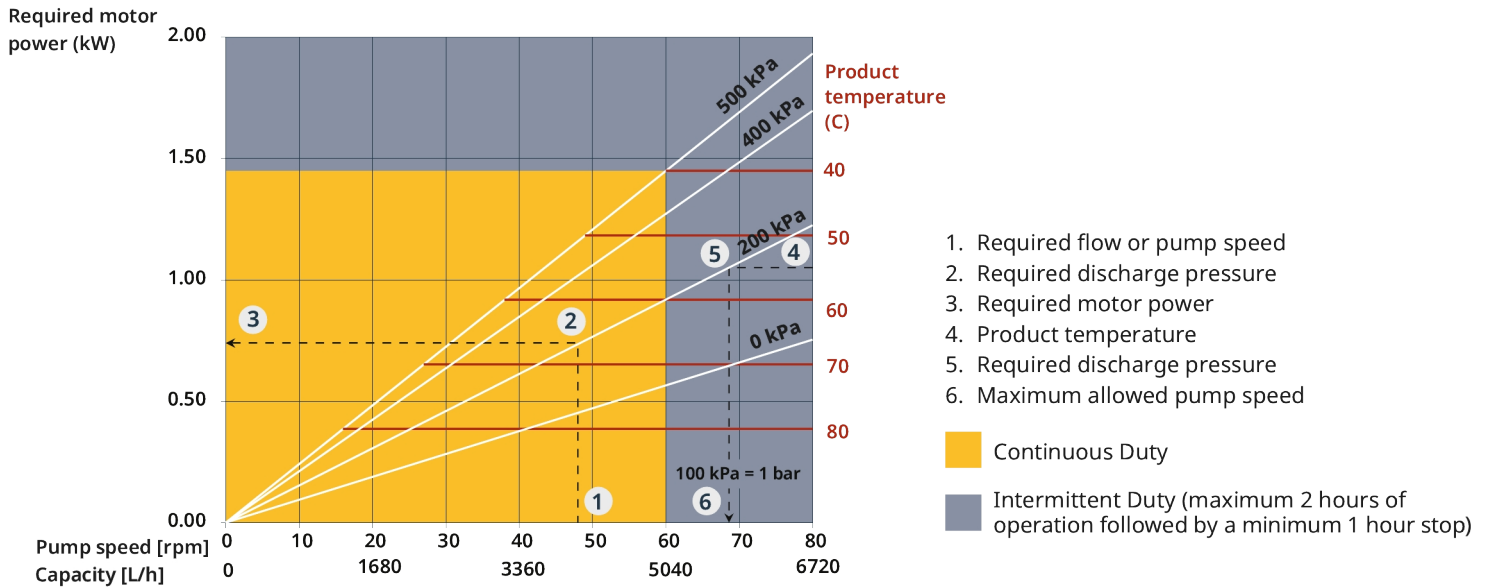
Features and benefits

- Robust design, ideal for transferring corrosive and abrasive fluids
- Pressures up to 5 bar
- The inner bore of the hose is the only part to come into contact with pumped fluids
- Longest life of hose at lowest cost of ownership, irrespective of process conditions
- Zinc-free pump surfaces
- Dry running and self-priming. Suction capability up to 9 mWC (236 inWc)
- Ease of maintenance – ability to replace the hose in situ
- Unaffected by air locking



C42 performance

Performance graph Bredel C42



Technical specifications

	Bredel C42 close-coupled hose pump
Max. flow rate continuous	5040 L/h
Max. flow rate continuous	1331 USGPH
Volume per revolution	1.4 L
Volume per revolution	0.37 USG
Max. continuous operating speed	60 rpm
Max. operating pressure	5 bar
Max. operating pressure	72 psi
Max. inlet pressure	2 bar abs
Max. inlet pressure	30 psi abs
Max. suction capability	9 mWC
Max. suction capability	354 inWC
Suction capability (80% Flow rate)	8 mWC
Suction capability (80% Flow rate)	315 inWC
Fluid temperature range	-10 °C to 80 °C
Fluid temperature range	14 °F to 176 °F
Min. starting torque	320 N m
Min. starting torque	2830 in.lbs
Weight	190 kg
Weight	420 lbs
Hose lubricant required	6 L
Port configurations	Left, Right
Compatible hose materials	NR
Flange assembly type	DIN

Please consult your Bredel representative for lower or higher temperature operation.

Allowable ambient temperature is based on pump capabilities and may be further limited by gearbox ambient capabilities.

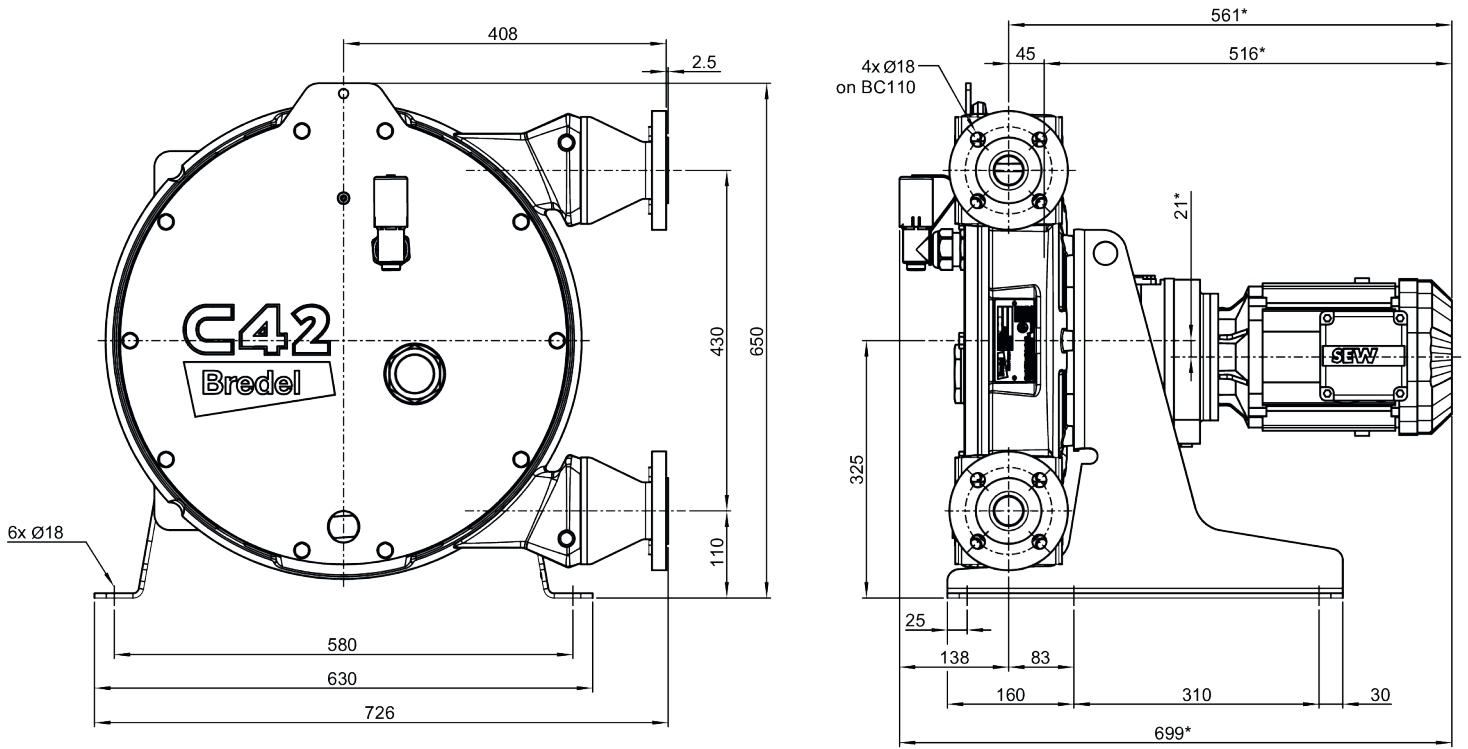
Materials of construction

	Bredel C42 close-coupled hose pump
Hose material	Natural rubber (NR)
Housing	Cast iron, ISO12944 category C4M
Rotor assembly	Aluminium, Cast iron, ISO12944 category C4M
Cover assembly	ISO12944 category C4M, Steel S235JR
Brackets and fasteners	Stainless steel
Support frame	ISO12944 category C4M, Steel S355JR
Hose clamps	Stainless steel 316
Seals	NBR

All ISO12944 category C4M coatings are zinc-free.

Support frame is available in Stainless steel 316, under special request.

C42 dimensions



All dimensions in millimetres

* with drive SEW RF67-DRN100LS4

Disclaimer: The information contained in this document is believed to be correct at the time of publication, but Watson-Marlow Bredel BV accepts no liability for any error it contains, and reserves the right to alter specifications without prior notice. All mentioned values in this document are values under controlled circumstances at our test bed. Actual flow rates achieved may vary because of changes in temperature, viscosity, inlet and discharge pressures and/or system configuration. APEX, DuCoNite, Bioprene and Bredel are registered trademarks.

wmfts.com/global



12 June 2024