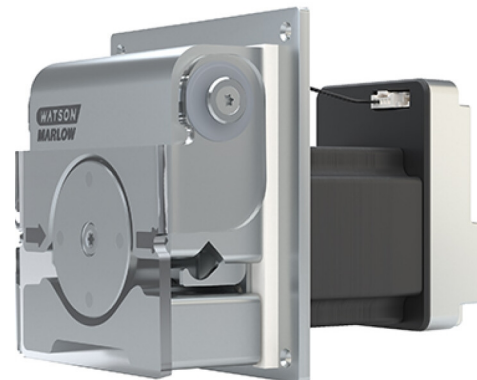


400 RXMD DriveSure ADC/En/Pn

400/RXMD series panel mount pumps

Features

- DriveSure panel mount pump for RXMD with standard or custom pressure settings
- 0.1 rpm to 550 rpm speed range at 0.1 rpm increments
- Watson-Marlow closed-loop control technology delivers consistent, cool and quiet performance
- EtherNet/IP™ and PROFINET® versions for digital network integration, control and monitoring
- ADC version with 4–20 mA, 0–10 V, 2–2000 Hz and fixed speed control options
- Integrated cover-open sensor and prime-switch input
- Downloadable PC software (WM Connect) to evaluate, optimise and diagnose via USB connection
- 12 V to 48 V DC supply voltage range to suit application requirements



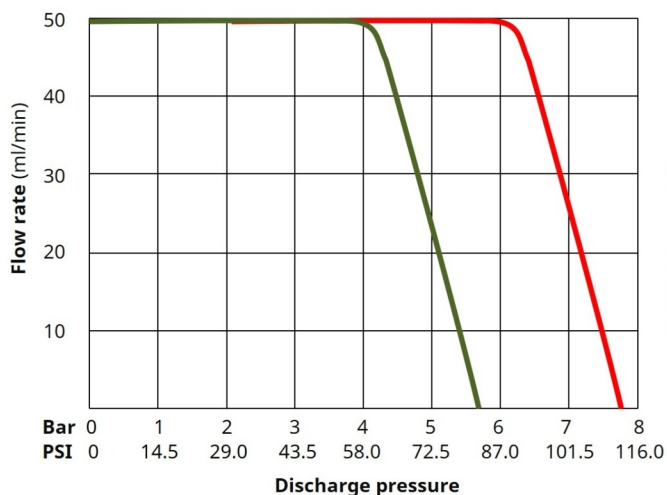
400 RXMD DriveSure ADC/En/Pn performance

Flow Rate (mL/min) by tube bore based on 0.1 rpm (Min) to 550 rpm (Max)		
Tube bore (mm)	0.1 RPM	550 RPM
1.6	0.025 (mL/min)	137 (mL/min)
3.2	0.091 (mL/min)	500 (mL/min)

Performance data is based on a 48 V DC power supply, pumping water, with 0 bar inlet and discharge pressure. Actual performance is dependent on power supply voltage (DriveSure range 12 V to 48 V DC). For further information contact your local Watson-Marlow representative.

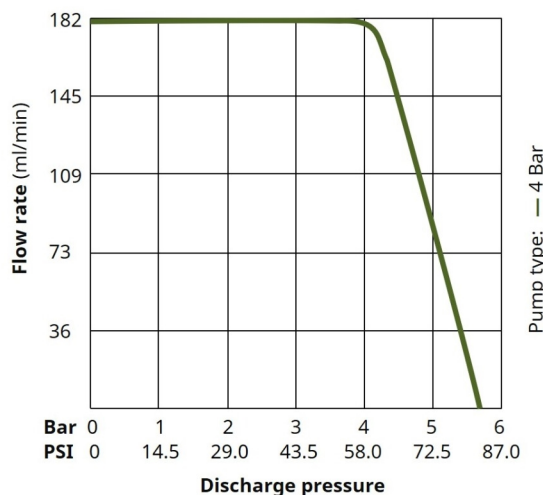
RXMD Pumphead, 1.6 mm Bore

Tygon E-3603, Water, 200 rpm



RXMD Pumphead, 3.2 mm Bore

Tygon E-3603, Water, 200 rpm



Technical specifications

	400 RXMD DriveSure ADC/En/Pn
Motor types	NEMA 24 stepper motor
Pumphead options	RXMD
Min. flow rate	0.025 ml/min
Max. flow rate	500 ml/min
Min. operating speed	0.1 rpm
Max. operating speed	550 rpm
Speed Resolution	0.1 rpm
Supply voltage	12 to 48 VDC
Operating temperature range	5 °C to 40 °C
Operating temperature range	41 °F to 104 °F
Rated Power	75 W
Control options	0–10 V, 2–2000 Hz, 4–20 mA, EtherNet/IP™, Fixed speed, Prime speed, PROFINET®
Alarms	Cover-open, Hardware fault, Over current, Over temperature, Software fault, Speed, Stall, Under/over voltage
Outputs	Fault, Tacho
External Inputs	Prime switch
Weight	1.8 - 1.9 kg
Weight	3.968 - 4.189 lbs
Location	Indoor, Enclosure
Humidity	80 % up to 31 °C (88 °F), decreasing linearly to 50 % at 40 °C (104 °F)
Max. altitude	2000 m
Max. altitude	6561 ft
Standards	BS EN 55011-2016+A2-2021, BS EN IEC 61326-1-2021, CC 47CFR (Part 15), CSA C22.2 No. 61010-1-12/AMD1:2018, EN 61010-1:2010/A1:2019, IEC 61010-1:2010/AMD1:2016, UL 61010-1:2012/R:2019-07
Certification and compliance	CB Certificate, EMC, NRTL certification
Compatible tubing bore size	1.6, 3.2 mm
Compatible tubing wall thickness	1.6 mm

Outputs are for ADC version only. Alarms are for EtherNet/IP™ & PROFINET® versions only.

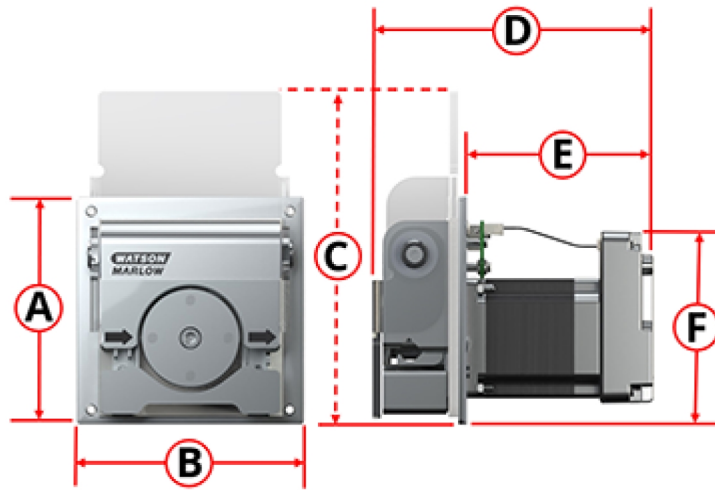
For detailed specifications of individual models refer to product reference manual or contact WMFTS representative.

Materials of construction

	400 RXMD DriveSure ADC/En/Pn
Pumphead body assembly	Acrylic glass, Anodized aluminum
Pumphead rotor assembly	Anodized aluminum, Stainless steel
Pumphead roller assembly	Stainless steel
Motor	Aluminum, Stainless steel
Controller Housing	ABS/PC, Aluminum
Mounting plate assembly	Anodized aluminum, EPDM, Stainless steel

Information listed covers the complete range. For detailed specifications of individual models/components refer to product reference manual or contact WMFTS representative.

400 RXMD DriveSure ADC/En/Pn dimensions



A		B		C		D		E		F	
mm	in	mm	in	mm	in	mm	in	mm	in	mm	in
114	4.49	114	4.49	167	6.57	142	5.39	96	3.78	97	3.82

Product codes



A	B	C	D	E
Control	Cable length	Direction	Max Pressure	Tube bore size
4 = ADC	1 = 1 m (3.28 ft) cable	1 = Clockwise (CW)	4 = 4 bar	3 = 1.6 mm
8 = En (EtherNet/IP)	3 = 3 m (9.84 ft) cable	2 = Counter clockwise (CCW)	6 = 6 bar	4 = 3.2 mm
9 = Pn (PROFINET)				

Accessories and Spares

Product	Product code
DriveSure cable pack - 24 V power supply/USB-C - trials only*	009.24CP.DVS
DriveSure cable pack - 48 V power supply/USB-C - trials only*	009.48CP.DVS
1 m Power Cable DriveSure ADC/En/Pn	009.1PW.DVS
3 m Power Cable DriveSure ADC/En/Pn	009.3PW.DVS
1 m Control Cable DriveSure ADC	009.1CC.DVS
3 m Control Cable DriveSure ADC	009.3CC.DVS
Ethernet Cable, RJ45 to RJ45, CAT 5e SHIELDED, 3m	059.9123.000
PROFINET* Cable, RJ45 to RJ45, CAT 5e SHIELDED, 3m	059.9128.000

*Cable packs do not include mains power lead. If required, order power leads suitable for your region.

Disclaimer: All flow rates shown were obtained pumping water at 20 °C (68 °F) with zero suction and delivery heads. Watson-Marlow, Pumpsil, PureWeld XL, Bioprene and Marprene are trademarks of Watson-Marlow Limited. Disclaimer: The information contained in this document is believed to be correct but Watson-Marlow Limited accepts no liability for any errors it contains, and reserves the right to alter specifications without notice. GORE and STA-PURE are trademarks of W. L. Gore & Associates. Please state the product code when ordering pumps and tubing.

wmfts.com/global



29 April 2024