

# Tube for PF22 / PD22

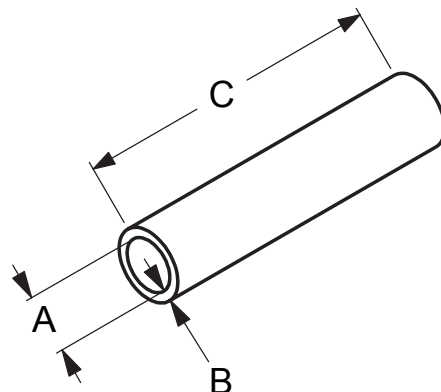
**Flexicon**  
Liquid Filling

Sales manual

Rev.: 04

25.02.2011

AEF



Tube for PF22 / PD22 – Part number	Description	A (ID) (mm)	B (wall thickness) (mm)	C (length) (m)
84-401-030	Silicone tube	3.0	3.5	5
84-401-050	Silicone tube	5.0	3.5	5
84-401-065	Silicone tube	6.5	3.5	5
84-401-080	Silicone tube	8.0	3.5	5
84-401-100	Silicone tube	10.0	3.5	5
84-401-125	Silicone tube	12.5	3.5	5
84-205-060	Pharmed tube	6.4	3.2	1
84-205-100	Pharmed tube	9.6	3.2	1
84-205-140	Pharmed tube	12.7	3.2	1

- Material certificate is supplied with the product, except for the pharmed tubes.