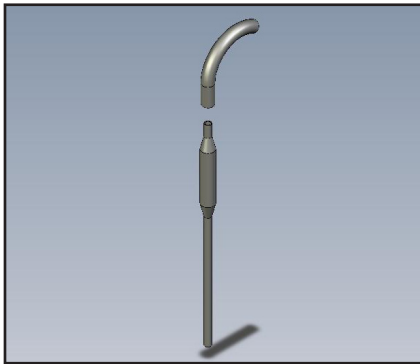


# FILLING NOZZLE

## – HAND-HELD

- Ergonomic design
- For manual movement of filling nozzle
- For filling from 1 ml to 150 ml



SPECIFICATIONS				
Materials	AISI 316L			
	A (ID)	B(OD)	Fill volumes from	Part number
Dimensions in mm	Ø1,3	Ø2,3	1.0 ml	30-015-020
	Ø3,1	Ø4,0	6.5 ml	30-015-040
	Ø4,1	Ø5,0	12.0 ml	30-015-050
	Ø5,1	Ø8,5 & 6,0	22.0 ml	30-015-060
Declaration of compliance - Type 2.1 acc.: DS/EN 10204				Included

